



## 双导杆伸缩销 DCPD50U Locator device DCPD50U

### 主要特点:

- 铝制壳体
- 机械自锁系统
- 高精度定位
- 5 个安装方式 (正面, 背面, 侧面 和 上面)
- 表面氮化双导杆 (700 HV)
- 铜制导套
- 行程: 40 mm
- 集成气缸缸径 50 mm
- 2 个气源接口 G1/8"
- 感应式接近开关(接口 M12x1)

### Main characteristics:

- Aluminium body
- Toggle action mechanism
- High accuracy of positioning
- 5 mounting areas (front, back, on the sides and on the top)
- Double nitrited plate rods (700 HV)
- Bronze guiding bush
- Rod stroke: 40 mm
- Integrated pneumatic cylinder bore 50 mm
- 2 feeding ports 1/8"
- Inductive proximity switch (connection M12x1)



[PDF](#)



[3D Step](#)



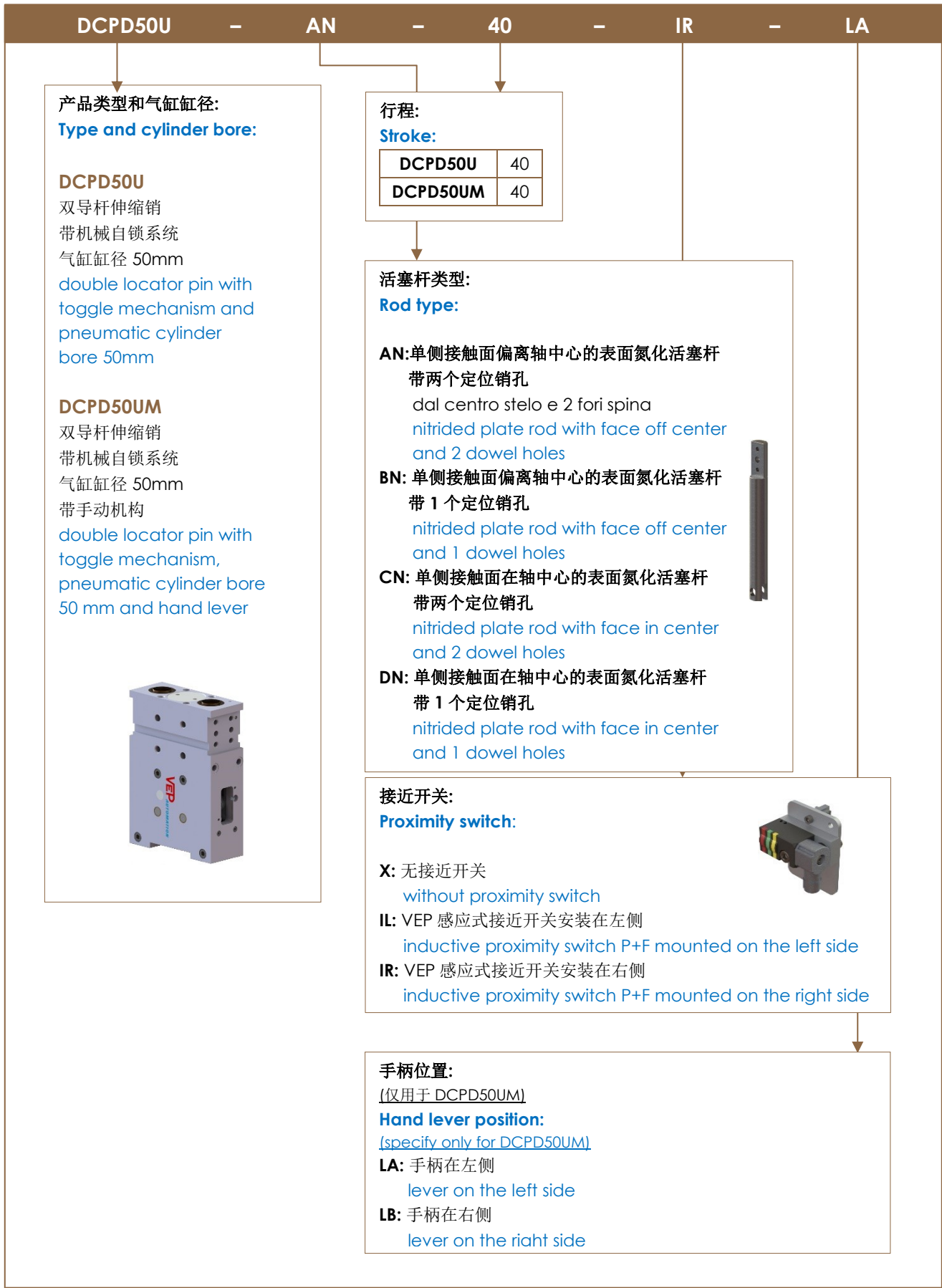
[Index](#)

### 索引. Index.

页码 Page	描述 Description	
1	主要特点 Main characteristics	
2	订货举例 Ordering example	
3	尺寸页码 Dimensional page	
4		DCPD50U-AN-40I...
5		DCPD50U-BN-40I...
6		DCPD50U-CN-40I.....
7		DCPD50U-DN-40I...
8	DCPD50UM-...N-40I...L...	
8	特性 Properties	
8	感应式接近开关 Diagram for inductive proximity switch	
8	气路图 / Pneumatic plan	
9	备件 / Spare parts	
9	备注 / Notes	

## 订货举例

### Ordering example.

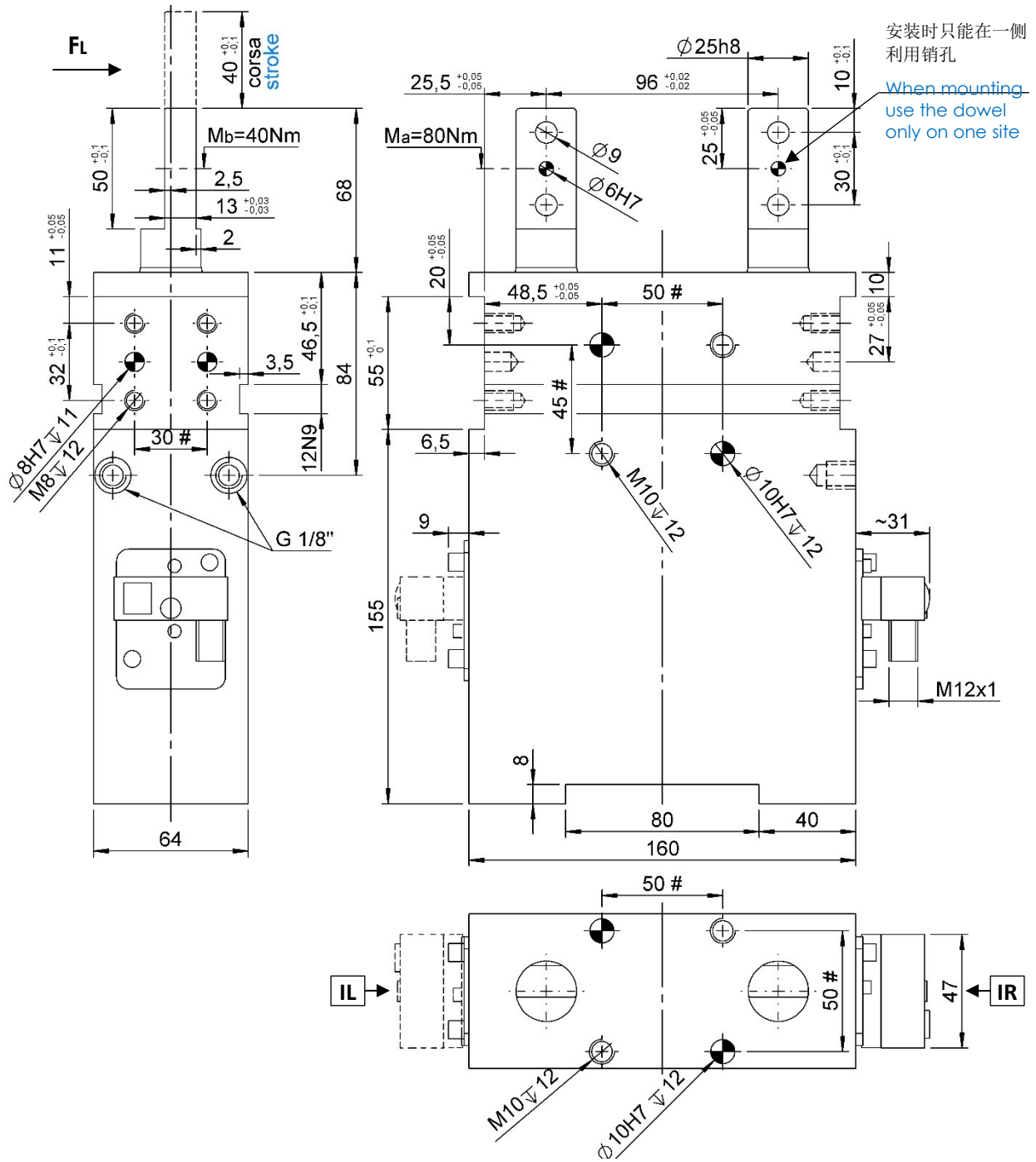






## DCPD50U-BN-40I...

双导杆定位销, D. 50, 带机械自锁系统, 行程 40 mm  
Locator device, D. 50, self-locking device, stroke 40 mm



#公差: 定位销孔  $\pm 0.02$ , 螺纹孔  $\pm 0.1$   
#Tolerances: dowel holes  $\pm 0.02$ , screw holes  $\pm 0.1$

类型 Type	气缸缸径 Cylinder bore	活塞杆行程 Rod stroke	FL 导杆侧向负载 Side load per guide rod FL	重量 Weight	耗气量 (5 bar) Air consumption (5 bar)
	[ mm ]	[ mm ]	[ N ]	[ Kg ]	[ l ]
DCPD50U-BN-40I...	50	40	400	~ 6,8	~ 0,8



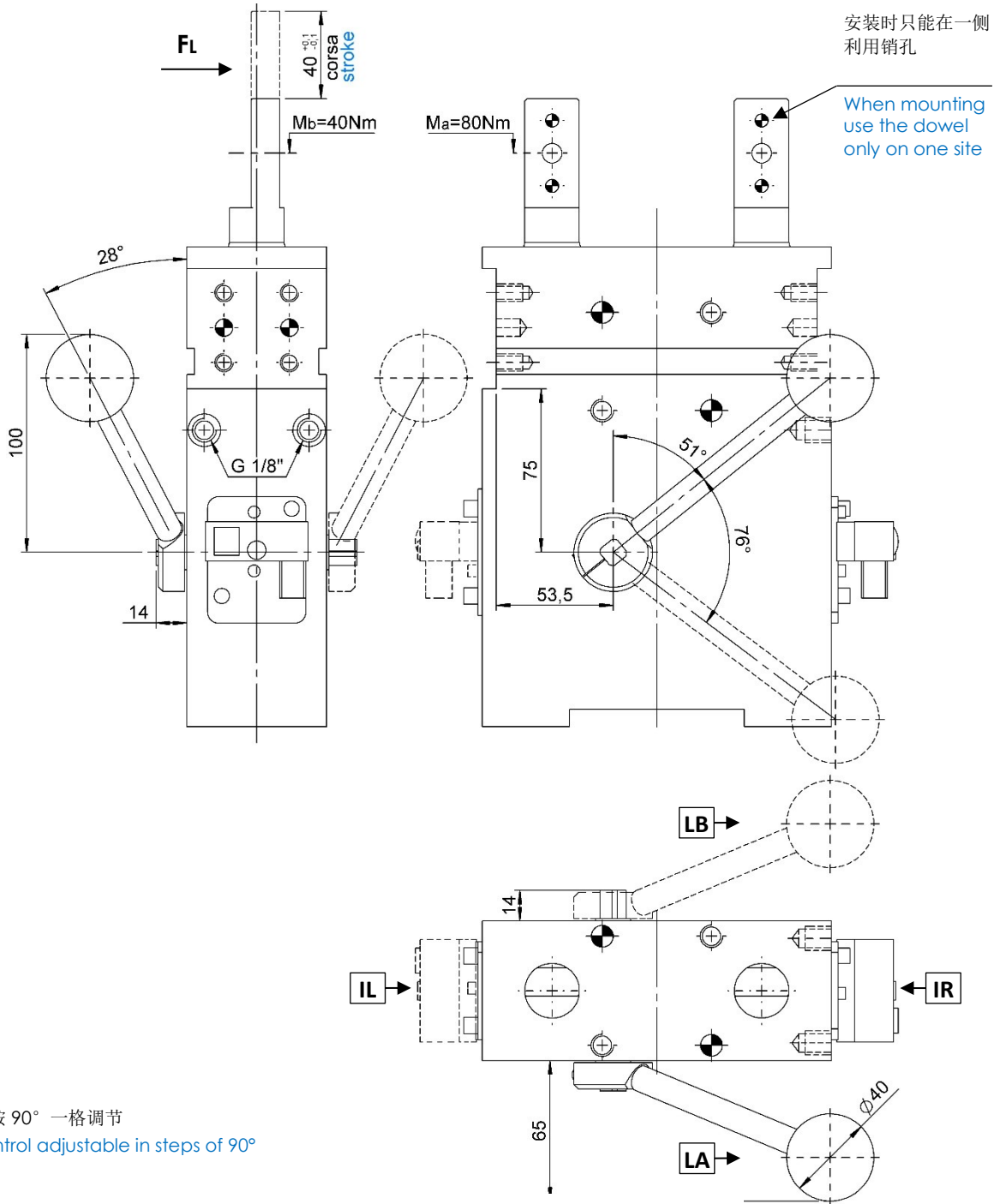




## DCPD50UM-...N-40I...L...

双导杆定位销, D. 50, 带自锁系统, 行程 40 mm

Locator device, D. 50, self-locking device, stroke 40 mm



#T公差: 定位销孔  $\pm 0.02$ , 螺纹孔  $\pm 0.1$

#Tolerances: dowel holes  $\pm 0.02$ , screw holes  $\pm 0.1$

类型 Type	缸径 Cylinder bore	活塞杆类型 Rod stroke	FL 导杆侧向负载 Side load per guide rod FL	最大手动施力 Max. manual force	重量 Weight	耗气量 (5 bar) Air consumption (5 bar)
	[ mm ]	[ mm ]	[ N ]	[ N ]	[ Kg ]	[ l ]
DCPD50UM-...N-40I...L...	50	40	400	200	~ 7,0	~ 0,8



## 特性.

### Properties.

推力 Pressing force (5 bar)	牵引力 Tensile force (5 bar)	FL 导杆最大静态侧向力 Static side force max. FL		最大 Ma 时扭矩 Max. Ma torque	最大 Mb 时扭矩 Max. Mb torque
[ N ]	[ N ]	[ N ]		[ Nm ]	[ Nm ]
1000	800	400	per stelo	80	40

## 感应式接近开关示意图 (cod. 09497/L/C).

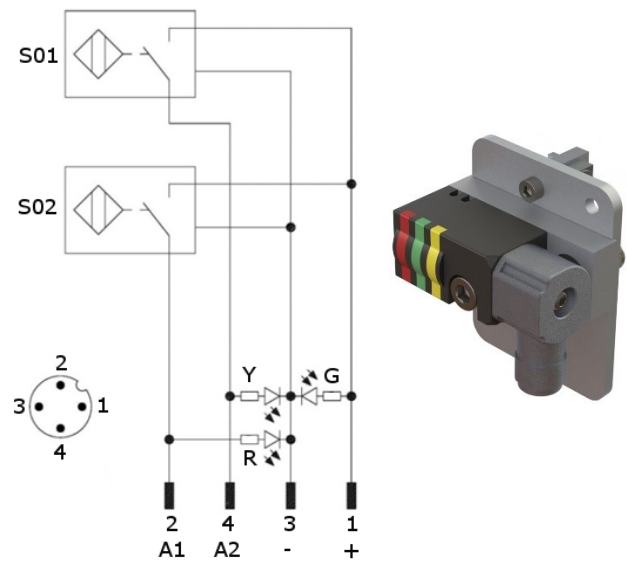
### Diagram for Inductive proximity switch (cod. 09497/L/C).

技术参数:

- 输出类型: PNP;
- 输入电压: 10-30 VDC;
- 最大换向电流: 200 mA;
- 耗电电流: < 25 mA;
- 电压差: < 2 V
- 工作温度: -25° / 70° C.

Technical data:

- Output type: PNP;
- Feeding voltage: 10-30 VDC;
- Max. commutating current: 200 mA;
- Power supply: < 25 mA;
- Voltage drop: < 2 V;
- Temperature range: -25° / 70° C.



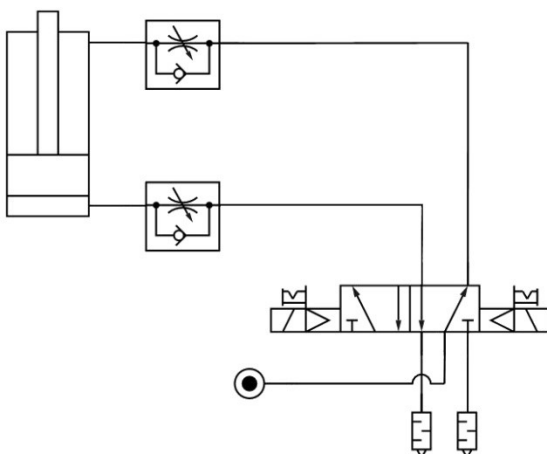
S01 = 打开信号  
S01 = opening signal  
S02 = 关闭信号  
S02 = closing signal

Y = 黄色 LED / yellow LED  
G = 绿色 LED / green LED  
R = 红色 LED / red LED

1 = 棕色线 / brown wire  
2 = 黑色线 / black wire  
3 = 蓝色线 / blue wire  
4 = 白色线 / white wire

## 气路图.

### Pneumatic plant.



类型 Type	耗气量 Air consumption (5 bar)	耗气量 Air consumption (6 bar)	工作气压 Working pressure
	[ l ]	[ l ]	[ bar ]
DCPD50U...	~ 0,8	~ 1,0	2 - 8
DCPD50UM...			



备件.

## Spare parts.

配套元件 # Kit	图片 Picture	描述 Description	代号 Article
接近开关 Proximity switch		VEP感应式接近开关 Inductive proximity switch VEP	09497/L/C 09497/L/C
密封配套 Seals kit		密封组件 用于 DCPD50U/DCPD50UM Seals for locator DCPD50U/DCPD50UM	SCR-DCPD50U
手动控制杆 Manual control lever		手柄用于 DCPD50UM Lever manual control DCPD50UM	09878/C

.....

.....

.....

本目录取消并替换了以前的目录。我们保留在没有任何通知的情况下进行添加或更改的权利。目录中的产品为标准产品，对特殊应用的任何请求都由技术/商务部门进行评估。本目录文档均属 VEP Automation S.r.l所有。未经授权许可，禁止任何形式的复制。

This catalogue cancels and replaces the previous ones. We reserve the right to make additions or changes without any notice. The products in the catalogue are standard; any enquiry of special applications is evaluated by technical/sales department. The complete documentation belongs to VEP Automation S.r.l. and without permission any kind of reproduction is forbidden.

### VEP Automation Headquarters

#### VEP Automation S.r.l

Via San Felice, 37  
10092 Beinasco – Torino (Italy)  
Tel. +39 011 3972572  
Email: [info@vepautomation.it](mailto:info@vepautomation.it)  
Web: [www.vepautomation.it](http://www.vepautomation.it)

### VEP Automation Germany

#### VEP Automation GmbH

Fritz Liebsch Str. 29  
D 26723 Emden (Germany)  
Tel. +49 04921 450758  
Email: [info@vepautomation.de](mailto:info@vepautomation.de)  
Web: [www.vepautomation.de](http://www.vepautomation.de)

### VEP Automation America

#### VEP Automation S.A. de C.V.

Av. Toluca 373 M Col. Olivar de los  
Padres Del. Álvaro Obregón  
01780 CDMX – (Ciudad de México)  
Tel. +52 55 1718 0929  
Email: [info@vepautomation.mx](mailto:info@vepautomation.mx)  
Web: [www.vepautomation.mx](http://www.vepautomation.mx)

### VEP Automation China

#### 维亿普自动化（苏州）有限公司

地址: 中国江苏省苏州市吴中区木渎镇  
木东路 317 号（联东 U 谷）1 幢 401 室  
Room 401, Building No 1, No 317, mudong Road,  
Wuzhong, mudu District, Suzhou City (China)  
电话: +86 512 6729 2226  
邮箱: [info@vepautomation.cn](mailto:info@vepautomation.cn)  
网址: [www.vepautomation.cn](http://www.vepautomation.cn)